

School of Engineering and Engineering Technology  
**ELECTRICAL & COMPUTER ENGINEERING, B.S.**  
**COMPUTER CONCENTRATION**  
**ECEN.COMP/ECCP**  
**2025-26**  
SUGGESTED COURSE SEQUENCE

**First Semester - Fall**

**16 Hours**

_____	BIBL	1033	3	Biblical Literature
_____	CPGR	2102	2	Intro to Computer Engineering (Fall only)
_____	ENGL	1013	3	English Composition I
_____	ENGR	1311	1	Manufacturing Processes Lab
_____	ENGR	1513	3	Intro to Engineering Practice I (Fall only)
_____	LETU	1101	1	Cornerstones of Life & Learning
_____	MATH	1903	3	Calculus I <sup>(1)</sup>

**Second Semester - Spring**

**16 Hours**

_____	ENGL	1023	3	English Composition II
_____	ENGR	1523	3	Intro to Engineering Practice II (Spring only)
_____	MATH	2013	3	Calculus II <sup>(1)</sup>
_____	PHYS	2011	1	University Physics I Lab (Spring only)
_____	PHYS	2013	3	University Physics I (Spring only)
_____	THEO	2043	3	Biblical Theology for the Christian Life

**Third Semester - Fall**

**17 Hours**

_____	COSC	1303	3	Computer Science I
_____	EEGR	2051	1	Circuits & Measurements Lab <sup>(1)</sup>
_____	EEGR	2053	3	Electric Circuits <sup>(1)</sup>
_____	MATH	2203	3	Differential Equations
_____	PHYS	2021	1	University Physics II Lab (Fall only)
_____	PHYS	2023	3	University Physics II (Fall only)
_____			3	Civic Engagement Elective

**Fourth Semester - Spring**

**15 Hours**

_____	COSC	2103	3	Computer Science II
_____	EEGR	2163	3	Advanced Circuits <sup>(1)</sup> (Spring only)
_____	EEGR	3213	3	Digital Electronics
_____	ENGR	2023	3	Introduction to Mechanics <sup>(1)</sup>
_____	ENGR	2400	0	Sophomore Design Seminar (Spring only)
_____	MATH	2003	3	Discrete Mathematics

**Fifth Semester - Fall**

**15 Hours**

_____	COMM	1113	3	Intro to Speech Communication
_____	COSC	2203	3	Data Structures
_____	CPGR	4233	3	Intro to Microprocessors/computers (Fall only)
_____	EEGR	3243	3	Electronics and Lab (Fall only)
_____	MATH	2303	3	Linear Algebra

**Sixth Semester - Spring**

**16 Hours**

_____	BUSI	3023	3	Entrepreneurship for Engineers <sup>(2)</sup>
_____	CPGR	4253	3	Microcomputer Design (Spring only)
_____	EEGR	4283	3	Digital Signal Processing (Spring only)
_____	ENGR	2704	4	Project Mgmt, Design & Entrepreneurship
_____	MATH		3	Math Elective <sup>(3)</sup>

**Seventh Semester - Fall**

**16 Hours**

_____	BIBL		3	Biblical Engagement Elective
_____	CHEM	1111	1	General Chemistry I Lab
_____	CHEM	1113	3	General Chemistry I
_____	COSC	3603	3	Networks & Data Communications (Fall only) <sup>(4)</sup>
_____	ENGR	4813	3	Senior Design I (Fall only)
_____	MATH	3403	3	Statistics

**Eighth Semester - Spring**

**15 Hours**

_____	ENGR	4823	3	Senior Design II (Spring only)
_____	THEO		3	Theological Engagement Elective
_____			3	Civic Engagement Elective
_____			3	Humanities & Fine Arts Elective
_____			3	Technical Elective <sup>(5)</sup>

**TOTAL HOURS 126**

1: Minimum grade of 'C' required.

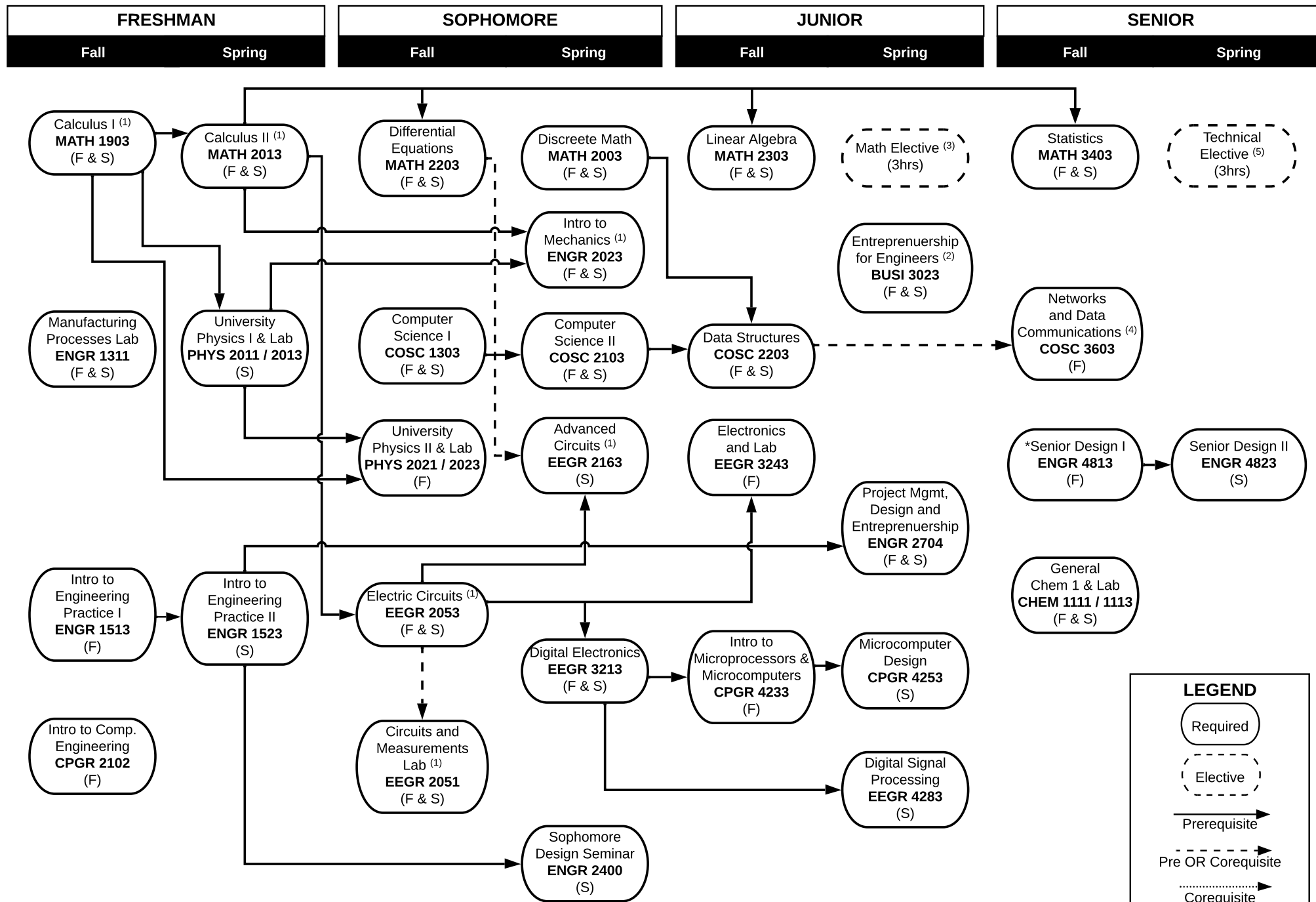
2: ENGR 6223 Advanced Engineering Mathematics recommended if considering engineering graduate school.

3: MATH 2023, MATH 3603, or MATH 4403

4: COSC 3303 Computer Architecture (Spring only) or COSC 3503 Operating Systems (Spring only) may be substituted for COSC 3603.

5: Any approved engineering course or computer science course

rev 4/22/2025



1. Minimum grade of 'C' required.

2. ENGR 6223 Advanced Engineering Mathematics recommended if considering engineering graduate school.

3. MATH 2023, MATH 3603, or MATH 4403

4. COSC3303 Computer Architecture (Spring only) or COSC3503 Operating Systems (Spring only) may be substituted for COSC3603

5. Any approved engineering course or COSC course.

\* Senior standing, completion of junior courses in concentration, and consent of instructor required.