

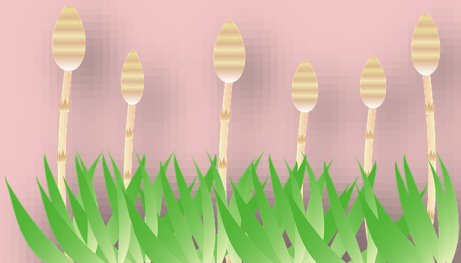
The background is a light pink color with a repeating pattern of various tropical leaves. The leaves are rendered in a flat, illustrative style with bold outlines. Colors include bright yellow, teal, orange, and dark blue. Some leaves are solid colors, while others are just outlines. The pattern is scattered across the entire page, framing the central text.

Trust God to Work

Family Discussion

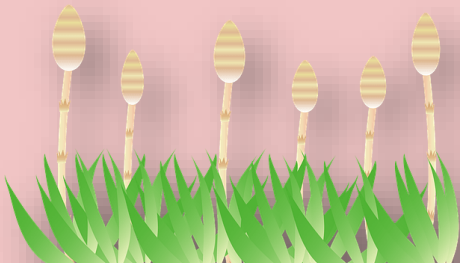
Jesus said ...

Matthew 13:18, 23 (NIV) "Listen then to what the parable of the sower means ... the one who received the seed that fell on good soil is the man who hears the word and understands it. He produces a crop, yielding a hundred, sixty or thirty times what was sown."



Discuss

- *What were some of the key seeds sown in your life when you heard and understood the gospel? How did those seeds “take root” in your heart?*
- *Who shared the gospel with you in any way prior to your decision to trust Christ?*
- *If possible, contact and thank them .*
- *Be motivated to share the Gospel ... one day someone will say “thank you” to you!*



Pray

- *Pray together for those to whom you have witnessed.*
- *Pray that their hearts will become receptive.*
- *Pray for full time Christian workers who preach and teach the Word of God.*
- *Pray that as the Gospel is communicated around the world that much spiritual growth will occur.*

