

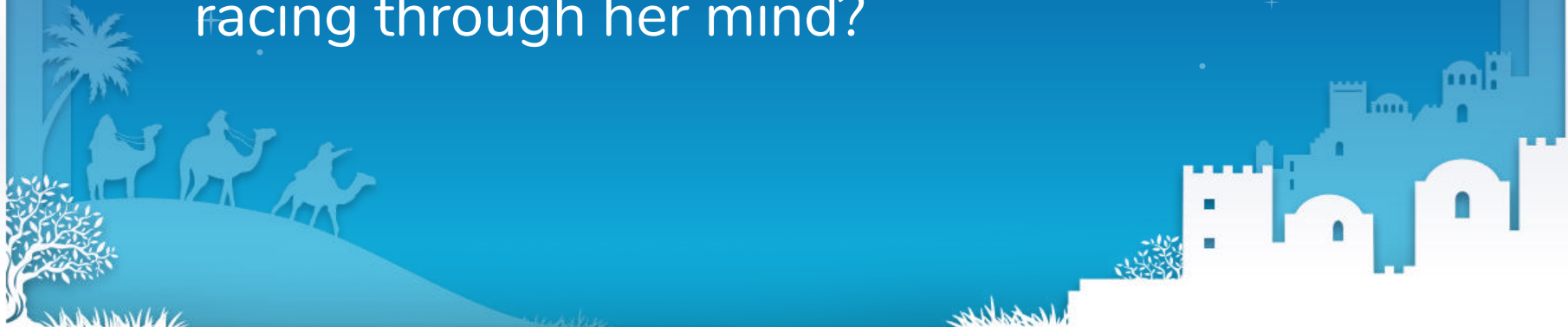
The background is a dark blue gradient representing a night sky. A large, bright, multi-pointed star is centered in the upper half. Scattered throughout the sky are smaller, faint stars and star-like symbols. In the lower portion of the image, there are white silhouettes. On the left, three camels are walking across a low hill, with a palm tree and a small bush nearby. On the right, there is a silhouette of a city or castle with various towers and domes.

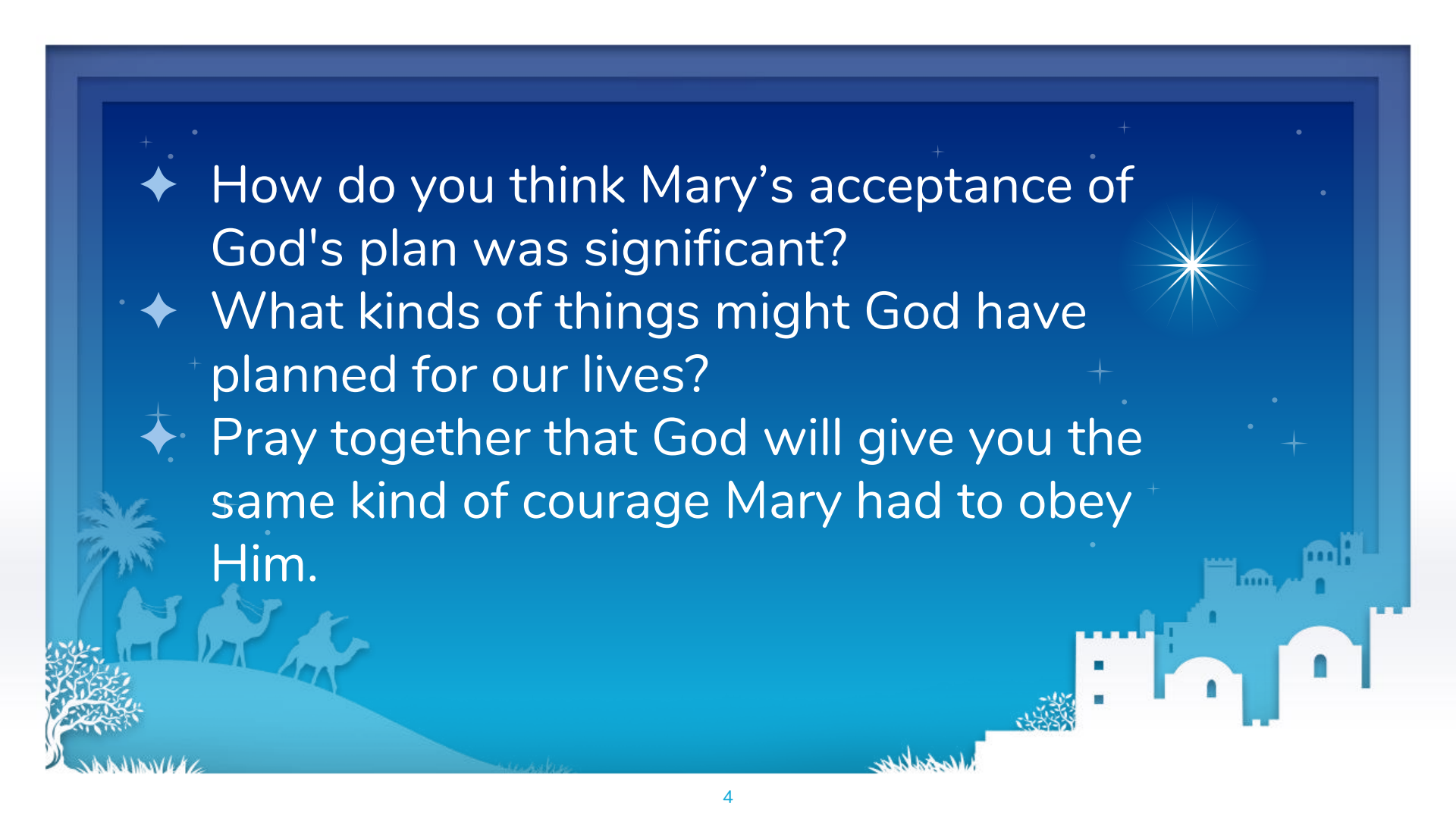
FAMILY DISCUSSION

IS JESUS GOD?

+ "How will this be," Mary asked the angel,
"since I am a virgin?" The angel answered,
"The Holy Spirit will come upon you, and
the power of the Most High will
overshadow you. So the holy one to be
born will be called the Son of God. ... "I am
the Lord's servant," Mary answered. "May
it be to me as you have said."

- ◆ Check Luke 1:20 and note how the angel says Zechariah's response was different from Mary's.
- ◆ What was the true sense of her question? What kinds of things were racing through her mind?



- 
- ◆ How do you think Mary's acceptance of God's plan was significant?
 - ◆ What kinds of things might God have planned for our lives?
 - ◆ Pray together that God will give you the same kind of courage Mary had to obey Him.